

KeContact P20

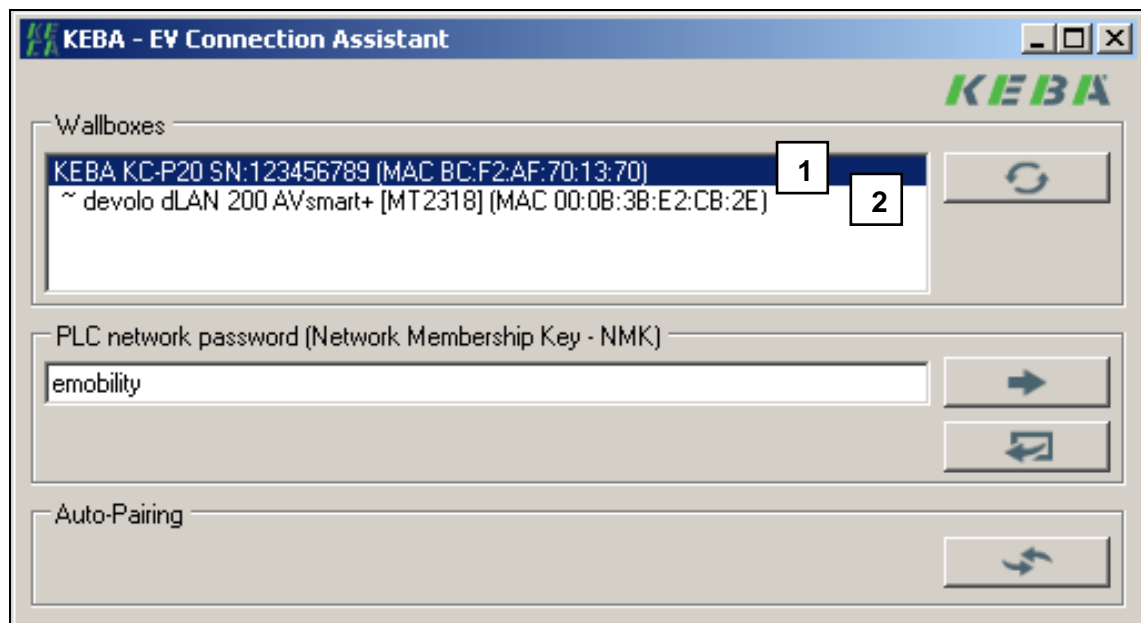
KEBA EV Connection Assistant manual

Overview

The KeContact P20 Wallbox is optional equipped with an integrated PLC modem (for Power line communication). The Electric vehicle (EV) communicates with the PLC modem of the Wallbox. If the Wallbox is connected to the network, the access of the EV to the Internet is possible if the EV supports this feature.





To enable the communication between Wallbox and Electric vehicle, it is necessary to pair the two devices with the same PLC network password (Network Membership Key - NMK).

The **KEBA EV Connection Assistant** software is used for this pairing process.



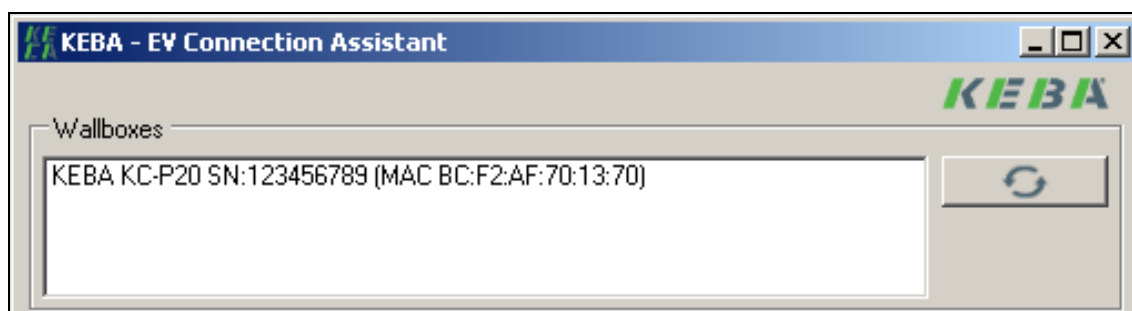
Parameters

<i>Wallboxes:</i>	Shows a list of all available Wallboxes and remote modems (Electric vehicles) found within the local network environment. [1]...Wallbox (KEBA KC-P20...) [2]...Remote modem of Electric vehicle (visible after pairing)
<i>PLC network password (Network Membership Key):</i>	Text field to enter the new PLC network password (Network Membership Key). Factory setting: "emobility"

Buttons	
	Refresh Use the [Refresh]-button to refresh the list of all available Wallboxes and remote modems within the local network environment.
	Transfer Use the [Transfer]-button to send the new PLC network password (Network Membership Key) to the Wallbox.
	Default Use the [Default]-button to set the Wallbox back to the factory PLC network password (Network Membership Key) – “emobility”.
	Auto-Pairing Use the [Auto-Pairing]-button to initialize the auto-pairing process. With this function, the Wallbox and the Electric vehicle will try to connect without entering a known PLC network password (Network Membership Key). Therefore you will not know the finally used password.

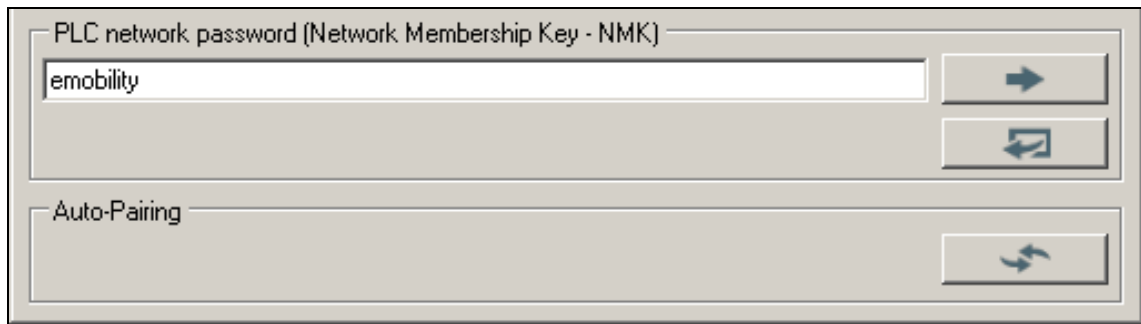
Manual-pairing process

- ▶ **Important!**
It is highly recommended to change the default PLC network password (Network Membership Key) of your Wallbox and EV to avoid unauthorized access to your PLC network. Change the PLC network password (Network Membership Key) of your vehicle first and then use the same password for your Wallbox. For more information on how to change the PLC network password in your EV, please consult the manual of your EV.
- ▶ Start the **KEBA EV Connection Assistant** software on your PC that has network access to your Wallbox.
- ▶ If you get an error message during the program start, you have to install the **WinPcap** software environment (see chapter “Software installation”).



- ▶ Please press the **[Refresh]**-button if you do not get a list of all available Wallboxes after starting the program.

- ▶ Select the desired Wallbox “KEBA KC-P20...” in the list (use the serial number or MAC address to identify the correct Wallbox if more are available at your site).



PLC network password (Network Membership Key - NMK)

emobility

Auto-Pairing

- ▶ Enter a new PLC network password (Network Membership Key), the same as in the vehicle, and press the **[Transfer]**-button to set the new password.

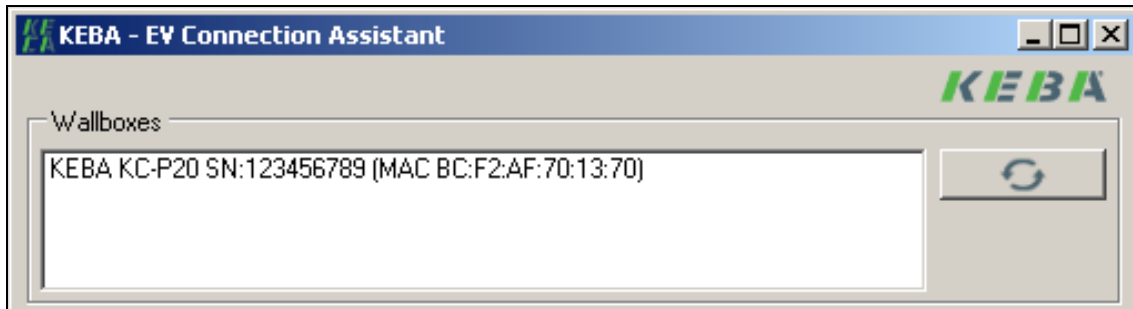
Alternative: Press the **[Default]**-button to set the Wallbox back to the factory PLC network password.

- ▶ Press the **[Refresh]**-button to check if the remote modem (Electric vehicle) is visible in the list.

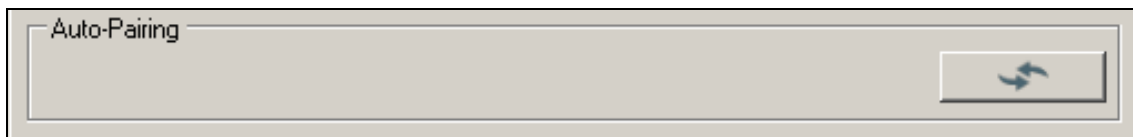
Then the pairing of Wallbox and Electric vehicle is finished.

Auto-pairing process

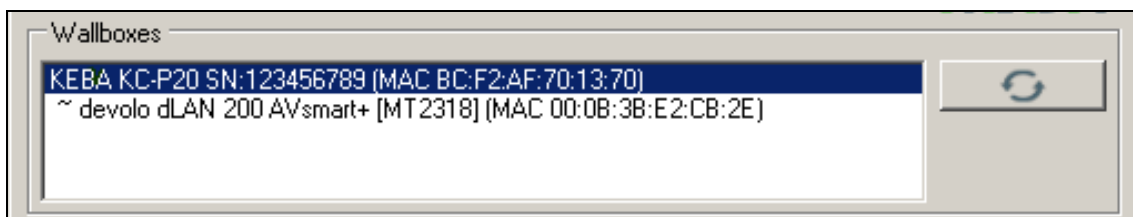
- ▶ **Important!**
Switch your vehicle into the *Auto-pairing mode*. Normally, this mode has a certain time limit and it is switched back to normal mode after a short time period (e.g. 2 minutes). For more information on how to activate the *Auto-pairing mode* in your EV, please consult the manual of your EV.
- ▶ Start the **KEBA EV Connection Assistant** software on your PC that has network access to your Wallbox.



- ▶ Select the desired Wallbox “KEBA KC-P20...” in the list (use the serial number or MAC address to identify the correct Wallbox if more are available at your site).



- ▶ Press the **[Auto-pairing]**-button to initialize the auto-pairing procedure.



- ▶ Wait a while until the Auto-pairing procedure has finished. Press the **[Refresh]**-button repeatedly to check if the remote modem (Electric vehicle) is already visible in the list.

Then the pairing of Wallbox and Electric vehicle is completed.

Software installation

System requirements:

- Windows XP or higher
- WinPcap software environment 4.1.2 or higher

Please download the latest version of the KEBA EV Connection Assistant in the download area under www.kecontact.com.

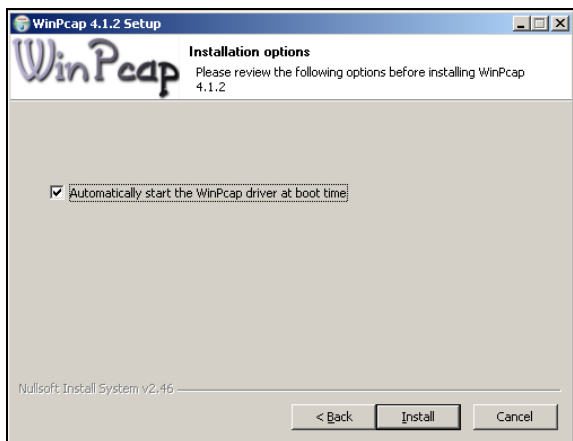


WinPcap installation

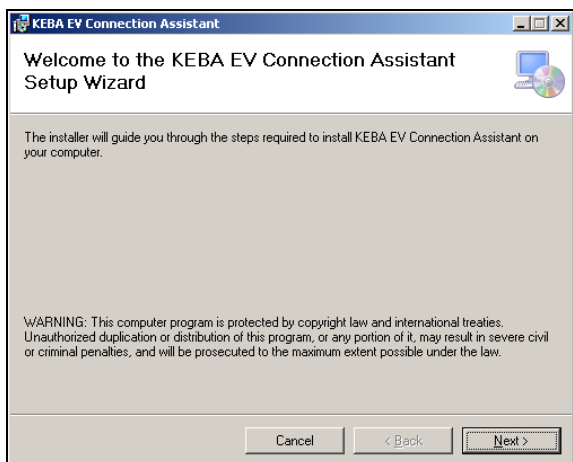
Please install the latest version of the WinPcap software environment to get network-access to your Wallbox.

Please visit www.winpcap.org for download.

- ▶ Start the Setup of **WinPcap** and follow the installation program.

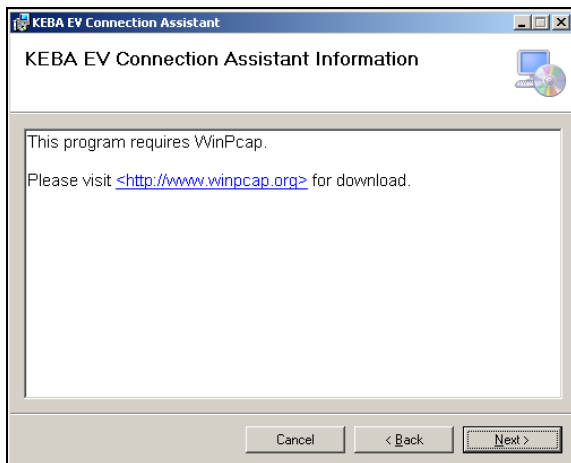


- ▶ Check the “Automatically start of the WinPcap driver at boot time” checkbox and follow the instructions to complete the installation.



KEBA EV Connection Assistant installation

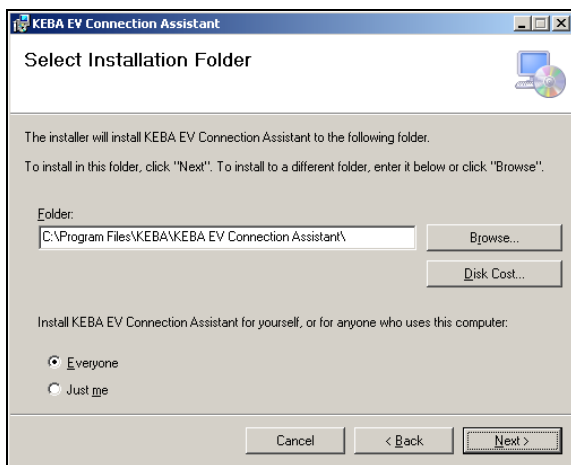
- ▶ Start the Setup of the **KEBA EV Connection Assistant** and follow the installation program.



WinPcap information

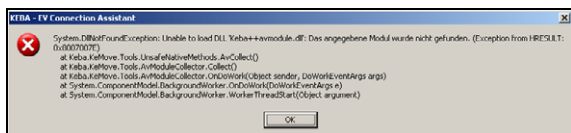
This program requires WinPcap (for details please see section “WinPcap installation”).

- ▶ Please install the WinPcap software environment if not done yet.



KEBA EV Connection Assistant Installation

- ▶ Select the desired folder for the program and follow the instructions to complete the installation.

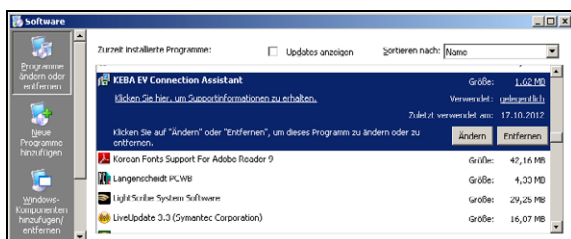


Starting the program

- ▶ Start the **KEBA EV Connection Assistant** program.

If you get an error message during the program start, you have to (re-)install the **WinPcap** software environment.

Uninstall



Removing the installation

- ▶ Use the Windows-Software Uninstall-tool to remove the installation of “KEBA EV Connection Assistant” and “WinPcap”.